



DEA No. RA0571996  
FL License # CMTL-0003  
CLIA No. 10D1094068

# Certificate of Analysis

## Compliance Test

**3CHI**  
274 MEDICAL DR # 875  
CARMEL, IN 46082

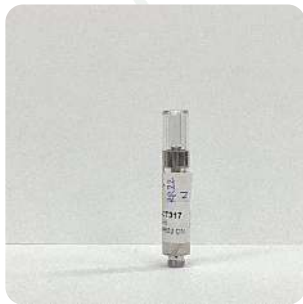
Batch # 220426-CN  
Batch Date: 2022-04-25  
Extracted From: Hemp

Sampling Method: MSP 7.3.1  
Test Reg State: Florida

Order # 3CH220426-200001  
Order Date: 2022-04-26  
Sample # AACT317

Sampling Date: 2022-04-29  
Lab Batch Date: 2022-04-29  
Completion Date: 2022-05-03

Initial Gross Weight: 100.900 g



Product Image

Potency Tested	Terpenes Tested	Heavy Metals Passed	Mycotoxins Passed	Pesticides Passed
Residual Solvents Passed	Listeria Monocytogenes Passed	Pathogenic Passed		

### Delta 8/Delta 10 Potency 12

**Tested**  
SOP13.043 (LCUV)

Specimen Weight: 59.440 mg

Analyte	LOD (%)	LOQ (%)	Result (mg/g)	(%)
CBN	0.000014	0.001	412.910	41.291
Delta-8 THC	0.000026	0.001	388.200	38.820
CBC	0.000018	0.001	102.020	10.202
CBD	0.000054	0.001	9.620	0.962
Delta-10 THC	0.000003	0.001	<LOQ	<LOQ
CBGA	0.000008	0.001	<LOQ	<LOQ
Delta-9 THC	0.000013	0.001	<LOQ	<LOQ
THCA	0.000032	0.001	<LOQ	<LOQ
CBG	0.000248	0.001	<LOQ	<LOQ
CBDV	0.000065	0.001	<LOQ	<LOQ
CBDA	0.00001	0.001	<LOQ	<LOQ
THCV	0.000007	0.001	<LOQ	<LOQ

### Potency Summary

Total Delta 8 38.820%	Total Delta 10 None Detected
Total THC None Detected	Total CBD 0.962%
Total CBG None Detected	Total CBN 41.291%
Other Cannabinoids 10.202%	Total Cannabinoids 91.275%

### Terpenes Summary

Analyte	Result (mg/g)	(%)
trans-Caryophyllene	10.358	1.036%
alpha-Bisabolol	8.466	0.847%
alpha-Humulene	5.473	0.547%
Linalool	3.672	0.367%
beta-Myrcene	2.323	0.232%
(R)-(+)-Limonene	1.026	0.103%
Geraniol	0.782	0.078%

**Total Terpenes: 3.210%**

Detailed Terpenes Analysis is on the following page

*Xueli Gao*  
Xueli Gao  
Ph.D., DABT  
Lab Toxicologist

*Aixia Sun*  
Aixia Sun  
D.H.Sc., M.Sc., B.Sc., MT (AAB)  
Lab Director/Principal Scientist



Definitions and Abbreviations used in this report: Total CBD = CBD + (CBD-A \* 0.877), \*Total CBDV = CBDV + (CBDVA \* 0.87), Total THC = THCA-A \* 0.877 + Delta 9 THC, Total THCV = THCV + (THCVA \* 0.87), CBG Total = (CBGA \* 0.877) + CBG, CBN Total = (CBNA \* 0.877) + CBN, Total CBC = CBC + (CBCA \* 0.877), Total THC-O-Acetate = Delta 8 THC-O-Acetate + Delta 9 THC-O-Acetate, Other Cannabinoids Total = Total Cannabinoids - All the listed cannabinoids on the summary section, Total Detected Cannabinoids = Delta6a10a-THC + Delta8-THC + Total CBN + CBT + Delta8-THCV + Total CBG + Total CBD + Total THCV + CBL + Total THC + Total CBC + Total CBDV + Delta10-THC + Total THC-O-Acetate, Analyte Details above show the Dry Weight Concentrations unless specified as 12% moisture concentration. (mg/ml) = Milligrams per Milliliter, LOQ = Limit of Quantitation, LOD = Limit of Detection, Dilution = Dilution Factor (ppb) = Parts per Billion, (%) = Percent, (cfu/g) = Colony Forming Unit per Gram (cfu/g) = Colony Forming Unit per Gram, LOD = Limit of Detection, (µg/g) = Microgram per Gram (ppm) = Parts per Million, (ppm) = (µg/g), (aw) = aw (area ratio) = Area Ratio, (mg/Kg) = Milligram per Kilogram, \*Measurement of Uncertainty = +/- 10%

This report shall not be reproduced, without written approval, from ACS Laboratory. The results of this report relate only to the material or product analyzed. Test results are confidential unless explicitly waived otherwise. Accredited by a third-party accrediting body as a competent testing laboratory pursuant to ISO/IEC 17025 of the International Organization for Standardization.



DEA No. RA0571996  
FL License # CMTL-0003  
CLIA No. 10D1094068

# Certificate of Analysis

Compliance Test

**3CHI**  
274 MEDICAL DR # 875  
CARMEL, IN 46082

Batch # 220426-CN  
Batch Date: 2022-04-25  
Extracted From: Hemp

Sampling Method: MSP 7.3.1  
Test Reg State: Florida

Order # 3CH220426-200001  
Order Date: 2022-04-26  
Sample # AACT317

Sampling Date: 2022-04-29  
Lab Batch Date: 2022-04-29  
Completion Date: 2022-05-03

Initial Gross Weight: 100.900 g

## Terpenes

Specimen Weight: 56.860 mg

Tested  
SOP13.023 (GC/GCMS)

Dilution Factor: 20.000

Analyte	LOQ (%)	Result (mg/g)	(%)	Analyte	LOQ (%)	Result (mg/g)	(%)
trans-Caryophyllene	0.002	10.358	1.036	trans-Nerolidol	0.002	<LOQ	<LOQ
alpha-Bisabolol	0.002	8.466	0.847	Geranyl acetate	0.002	<LOQ	<LOQ
alpha-Humulene	0.002	5.473	0.547	Fenchyl Alcohol	0.002	<LOQ	<LOQ
Linalool	0.002	3.672	0.367	Gamma-Terpinene	0.002	<LOQ	<LOQ
beta-Myrcene	0.002	2.323	0.232	Fenchone	0.002	<LOQ	<LOQ
(R)-(+)-Limonene	0.002	1.026	0.103	Farnesene	0.002	<LOQ	<LOQ
Geraniol	0.002	0.782	0.078	Eucalyptol	0.002	<LOQ	<LOQ
(+)-Cedrol	0.002	<LOQ	<LOQ	cis-Nerolidol	0.002	<LOQ	<LOQ
Guaiol	0.002	<LOQ	<LOQ	Caryophyllene oxide	0.002	<LOQ	<LOQ
Hexahydrothymol	0.002	<LOQ	<LOQ	Camphors	0.006	<LOQ	<LOQ
Isoborneol	0.002	<LOQ	<LOQ	Camphene	0.002	<LOQ	<LOQ
Isopulegol	0.002	<LOQ	<LOQ	Borneol	0.004	<LOQ	<LOQ
Sabinene	0.002	<LOQ	<LOQ	beta-Pinene	0.002	<LOQ	<LOQ
Nerol	0.002	<LOQ	<LOQ	alpha-Terpinene	0.002	<LOQ	<LOQ
Ocimene	0.000	<LOQ	<LOQ	alpha-Pinene	0.002	<LOQ	<LOQ
Pulegone	0.002	<LOQ	<LOQ	alpha-Phellandrene	0.002	<LOQ	<LOQ
Sabinene Hydrate	0.002	<LOQ	<LOQ	alpha-Cedrene	0.002	<LOQ	<LOQ
Terpinolene	0.002	<LOQ	<LOQ	3-Carene	0.002	<LOQ	<LOQ
Total Terpeneol	0.001	<LOQ	<LOQ	Valencene	0.002	<LOQ	<LOQ

Total Terpenes: 3.210%

## Mycotoxins

Specimen Weight: 265.800 mg

Passed  
SOP13.007 (LCMS)

## Heavy Metals

Specimen Weight: 248.660 mg

Passed  
SOP13.048 (ICP-MS)

Dilution Factor: 5.643

Analyte	LOQ (ppb)	Action Level (ppb)	Result (ppb)	Analyte	LOQ (ppb)	Action Level (ppb)	Result (ppb)
Aflatoxin B1	6	20	<LOQ	Aflatoxin G2	6	20	<LOQ
Aflatoxin B2	6	20	<LOQ	Ochratoxin A	12	20	<LOQ
Aflatoxin G1	6	20	<LOQ				

Dilution Factor: 201

Analyte	LOQ (ppb)	Action Level (ppb)	Result (ppb)	Analyte	LOQ (ppb)	Action Level (ppb)	Result (ppb)
Arsenic (As)	100	1500	<LOQ	Lead (Pb)	100	500	<LOQ
Cadmium (Cd)	100	500	<LOQ	Mercury (Hg)	100	3000	<LOQ

Xueli Gao  
Ph.D., DABT  
Lab Toxicologist

Aixia Sun  
D.H.Sc., M.Sc., B.Sc., MT (AAB)  
Lab Director/Principal Scientist



Definitions and Abbreviations used in this report: Total CBD = CBD + (CBD-A \* 0.877), \*Total CBDV = CBDV + (CBDVA \* 0.87), Total THC = THCA-A \* 0.877 + Delta 9 THC, Total THCV = THCV + (THCVA \* 0.87), CBG Total = (CBGA \* 0.877) + CBG, CBN Total = (CBNA \* 0.877) + CBN, Total CBC = CBC + (CBCA \* 0.877), Total THC-O-Acetate = Delta 8 THC-O-Acetate + Delta 9 THC-O-Acetate, Other Cannabinoids Total = Total Cannabinoids - All the listed cannabinoids on the summary section, Total Detected Cannabinoids = Delta6a10a-THC + Delta8-THC + Total CBN + CBT + Delta8-THCV + Total CBG + Total CBD + Total THCV + CBL + Total THC + Total CBC + Total CBDV + Delta10-THC + Total THC-O-Acetate, Analyte Details above show the Dry Weight Concentrations unless specified as 12% moisture concentration. (mg/ml) = Milligrams per Milliliter, LOQ = Limit of Quantitation, LOD = Limit of Detection, Dilution = Dilution Factor (ppb) = Parts per Billion, (%) = Percent, (cfu/g) = Colony Forming Unit per Gram (cfu/g) = Colony Forming Unit per Gram, LOD = Limit of Detection, (µg/g) = Microgram per Gram (ppm) = Parts per Million, (ppm) = (µg/g), (aw) = aw (area ratio) = Area Ratio, (mg/Kg) = Milligram per Kilogram, \*Measurement of Uncertainty = +/- 10%

This report shall not be reproduced, without written approval, from ACS Laboratory. The results of this report relate only to the material or product analyzed. Test results are confidential unless explicitly waived otherwise. Accredited by a third-party accrediting body as a competent testing laboratory pursuant to ISO/IEC 17025 of the International Organization for Standardization.



DEA No. RA0571996  
FL License # CMTL-0003  
CLIA No. 10D1094068

# Certificate of Analysis

Compliance Test

**3CHI**  
274 MEDICAL DR # 875  
CARMEL, IN 46082

Batch # 220426-CN  
Batch Date: 2022-04-25  
Extracted From: Hemp

Sampling Method: MSP 7.3.1  
Test Reg State: Florida

Order # 3CH220426-200001  
Order Date: 2022-04-26  
Sample # AACT317

Sampling Date: 2022-04-29  
Lab Batch Date: 2022-04-29  
Completion Date: 2022-05-03

Initial Gross Weight: 100.900 g



## Pesticides FL V4

Specimen Weight: 265.800 mg

Dilution Factor: 5.643

Analyte	LOQ (ppb)	Action Level (ppb)	Result (ppb)	Analyte	LOQ (ppb)	Action Level (ppb)	Result (ppb)
Abamectin	28.23	300	<LOQ	Fludioxonil	48	3000	<LOQ
Acephate	30	3000	<LOQ	Hexythiazox	30	2000	<LOQ
Acequinocyl	48	2000	<LOQ	Imazalil	30	100	<LOQ
Acetaminiprid	30	3000	<LOQ	Imidacloprid	30	3000	<LOQ
Aldicarb	30	100	<LOQ	Kresoxim Methyl	30	1000	<LOQ
Azoxystrobin	10	3000	<LOQ	Malathion	30	2000	<LOQ
Bifenazate	30	3000	<LOQ	Metaxalyl	10	3000	<LOQ
Bifenthrin	30	500	<LOQ	Methiocarb	30	100	<LOQ
Boscalid	10	3000	<LOQ	Methomyl	30	100	<LOQ
Captan	30	3000	<LOQ	methyl-Parathion	10	100	<LOQ
Carbaryl	10	500	<LOQ	Mevinphos	10	100	<LOQ
Carbofuran	10	100	<LOQ	Myclobutanil	30	3000	<LOQ
Chlorantraniliprole	10	3000	<LOQ	Naled	30	500	<LOQ
Chlordane	10	100	<LOQ	Oxamyl	30	500	<LOQ
Chlorfenapyr	30	100	<LOQ	Pacllobutrazol	30	100	<LOQ
Chloromequat Chlo ride	10	3000	<LOQ	Pentachloronitro benzene	10	200	<LOQ
Chlorpyrifos	30	100	<LOQ	Permethrin	30	1000	<LOQ
Clofentezine	30	500	<LOQ	Phosmet	30	200	<LOQ
Coumaphos	48	100	<LOQ	Piperonylbutoxid e	30	3000	<LOQ
Cyfluthrin	30	1000	<LOQ	Prallethrin	30	400	<LOQ
Cypermethrin	30	1000	<LOQ	Propiconazole	30	1000	<LOQ
Daminozide	30	100	<LOQ	Propoxur	30	100	<LOQ
Diazinon	30	200	<LOQ	Pyrethrins	30	1000	<LOQ
Dichlorvos	30	100	<LOQ	Pyridaben	30	3000	<LOQ
Dimethoate	30	100	<LOQ	Spinetoram	10	3000	<LOQ
Dimethomorph	48	3000	<LOQ	Spinosad	30	3000	<LOQ
Ethoprophos	30	100	<LOQ	Spiromesifen	30	3000	<LOQ
Etofenprox	30	100	<LOQ	Spirotetramat	30	3000	<LOQ
Etoxazole	30	1500	<LOQ	Spiroxamine	30	100	<LOQ
Fenhexamid	10	3000	<LOQ	Tebuconazole	30	1000	<LOQ
Fenoxycarb	30	100	<LOQ	Thiacloprid	30	100	<LOQ
Fenpyroximate	30	2000	<LOQ	Thiamethoxam	30	1000	<LOQ
Fipronil	30	100	<LOQ	Trifloxystrobin	30	3000	<LOQ
Fonicamid	30	2000	<LOQ				

**Passed**  
SOP13.007  
(LCMS/GCMS)



## Residual Solvents - FL (CBD)

Specimen Weight: 7.800 mg

Dilution Factor: 1.000

Analyte	LOQ (ppm)	Action Level (ppm)	Result (ppm)	Analyte	LOQ (ppm)	Action Level (ppm)	Result (ppm)
1,1-Dichloroethane	0.16	8	<LOQ	Heptane	1.39	5000	<LOQ
1,2-Dichloroethane	0.04	5	<LOQ	Hexane	1.17	290	<LOQ
Acetone	2.08	5000	<LOQ	Isopropyl alcohol	1.39	500	<LOQ
Acetonitrile	1.17	410	<LOQ	Methanol	0.69	3000	<LOQ
Benzene	0.02	2	<LOQ	Methylene chloride	2.43	600	<LOQ
Butanes	2.5	2000	<LOQ	Pentane	2.08	5000	<LOQ
Chloroform	0.04	60	<LOQ	Propane	5.83	2100	<LOQ
Ethanol	2.78	5000	<LOQ	Toluene	2.92	890	<LOQ
Ethyl Acetate	1.11	5000	<LOQ	Total Xylenes	2.92	2170	<LOQ
Ethyl Ether	1.39	5000	<LOQ	Trichloroethylene	0.49	80	<LOQ
Ethylene Oxide	0.1	5	<LOQ				

**Passed**  
SOP13.039 (GCMS)



## Pathogenic SAE (qPCR)

Specimen Weight: 226.670 mg

Dilution Factor: 1.000

Analyte	Action Level (cfu/g)	Result (cfu/g)	Analyte	Action Level (cfu/g)	Result (cfu/g)
Aspergillus (Fla vus, Fumigatus, Niger, Terreus)	1	Absence in 1g	Salmonella	1	Absence in 1g
E.Coli	1	Absence in 1g			

**Passed**  
SOP13.010 (qPCR)



## Listeria Monocytogenes

Specimen Weight: 1022.800 mg

Dilution Factor: 1.000

Analyte	Action Level (cfu/g)	Result
Listeria Monocytogenes	1	Absence in 1g

**Passed**  
SOP13.010 (qPCR)

*Xueli Gao*  
Xueli Gao Lab Toxicologist  
Ph.D., DABT

*Aixia Sun*  
Aixia Sun Lab Director/Principal Scientist  
D.H.Sc., M.Sc., B.Sc., MT (AAB)



Definitions and Abbreviations used in this report: Total CBD = CBD + (CBD-A \* 0.877), \*Total CBDV = CBDV + (CBDVA \* 0.87), Total THC = THCA-A \* 0.877 + Delta 9 THC, Total THCV = THCV + (THCVA \* 0.87), CBG Total = (CBGA \* 0.877) + CBG, CBN Total = (CBNA \* 0.877) + CBN, Total CBC = CBC + (CBCA \* 0.877), Total THC-O-Acetate = Delta 8 THC-O-Acetate + Delta 9 THC-O-Acetate, Other Cannabinoids Total = Total Cannabinoids - All the listed cannabinoids on the summary section, Total Detected Cannabinoids = Delta6a10a-THC + Delta8-THC + Total CBN + CBT + Delta8-THCV + Total CBG + Total CBD + Total THCV + Total THC + Total CBC + Total CBDV + Delta10-THC + Total THC-O-Acetate, Analyte Details above show the Dry Weight Concentrations unless specified as 12% moisture concentration. (mg/ml) = Milligrams per Milliliter, LOQ = Limit of Quantitation, LOD = Limit of Detection, Dilution = Dilution Factor (ppb) = Parts per Billion, (%) = Percent, (cfu/g) = Colony Forming Unit per Gram (cfu/g) = Colony Forming Unit per Gram, (µg/g) = Microgram per Gram (ppm) = Parts per Million, (ppm) = (µg/g), (aw) = aw (area ratio) = Area Ratio, (mg/Kg) = Milligram per Kilogram, \*Measurement of Uncertainty = +/- 10%

This report shall not be reproduced, without written approval, from ACS Laboratory. The results of this report relate only to the material or product analyzed. Test results are confidential unless explicitly waived otherwise. Accredited by a third-party accrediting body as a competent testing laboratory pursuant to ISO/IEC 17025 of the International Organization for Standardization.