

Sugar

130 McCormick Ave
Suite 105
Costa Mesa, CA
92626

Analysis Report

Batch # AL-00031
Batch Date 4/10/2022
Extracted from Hemp
Test Reg State Florida
Production Facility DelCann Oils
Production Date 07/02/2022

Sample Name PHC White Fire
Sample Type 2g live Rosin cartridge
Sample ID IA-67319
Net Weight (g) 2
Order Date 7/03/2022
Date Received 07/01/2022
Lab Batch Date 07/01/2022
Date Completed 07/02/2022



Product Image

Potency Summary

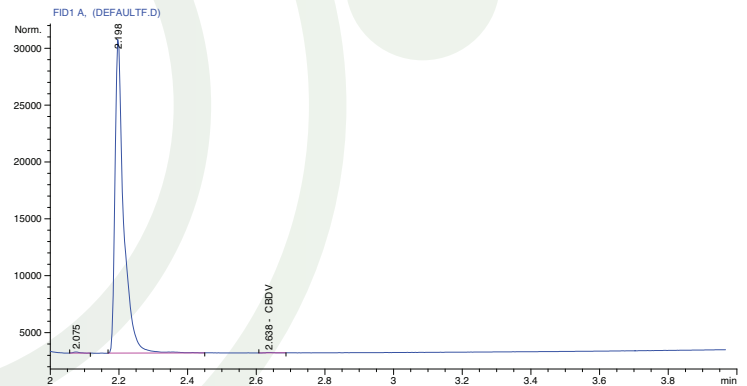
| | |
|---------------------------------------|--|
| Total Delta 8 1742.20 | Total THC None Detected |
| Total Delta 9 None Detected | Total Delta 10 None Detected |
| Total PHC 251.54 | Total CBD None Detected |
| Total CBN None Detected | Total Cannabinoids 1993.74 |

Cannabinoid Profile Tested by GC/FID

Potency 12 Test

| Analyte | LOD % | LOQ % | Result (mg/g) | Result (UNIT) |
|---------|-------|-------|---------------|---------------|
| Δ8-THC | 0.000 | 0.001 | 871.10 | 1742.20 |
| Δ9-THC | 0.000 | 0.001 | 0.000 | <LOQ |
| Δ10-THC | 0.000 | 0.001 | 0.000 | <LOQ |
| Δ8-THCO | 0.000 | 0.001 | 0.000 | <LOQ |
| PHC | 0.000 | 0.001 | 125.77 | 251.54 |
| CBC | 0.000 | 0.001 | 0.000 | <LOQ |
| CBD | 0.000 | 0.001 | 0.000 | <LOQ |
| THCV | 0.000 | 0.001 | 0.000 | <LOQ |
| THCA-A | 0.000 | 0.001 | 0.000 | <LOQ |
| CBN | 0.000 | 0.001 | 0.000 | <LOQ |
| CBGA | 0.000 | 0.001 | 0.000 | <LOQ |
| CBG | 0.000 | 0.001 | 0.000 | <LOQ |
| CBDV | 0.000 | 0.001 | 0.000 | <LOQ |
| CBDA | 0.000 | 0.001 | 0.000 | <LOQ |

Chromatogram



ND = Not Detected; NT = Not Tested; LOD = Limit of Detection;
LOQ = Limit of Quantitation; RL = Reporting Limit; Δ = Delta;
Total Δ9-THC = Δ9-THCA * 0.877 + Δ9-THC; Total CBD = CBDA * 0.877 + CBD

ISO ANALYTICS, INC.

This sample has been tested by Iso Analytics, Inc. using valid testing methodologies and a quality system. Values reported relate only to the sample tested. Iso Analytics, Inc. makes no claims as to the efficacy, safety or other risks associated with any detected or non-detected levels of any compounds reported herein. This Report shall not be reproduced except in full, without the written approval of Iso Analytics, Inc.



Charles Louis, PhD
Chief Scientist
Iso Analytics, Inc.