


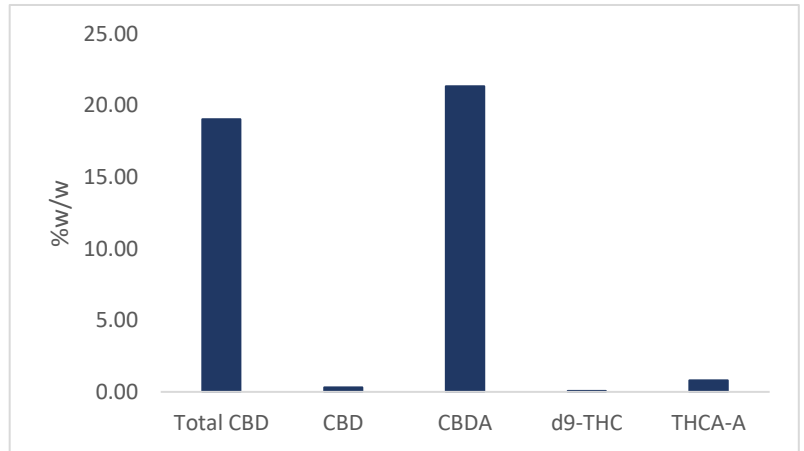
Certificate of Analysis

Client	Berkshire CBD	
Email:	info@berkshirecbd.com	
Sample Name	Hawaiian Haze	
Sample Type	Dried Biomass (DB)	
Intake Date	8-Oct-19	
Sample ID	ES-190784DB	

Approved By:	Keith Griswold, M.S.	Signature:	Date:
Title:	Analytics & Formulations Dir.		4-Dec-2019

Method:	C5210 Cannabinoids-L HPLC-UV	Analyst:	Analysis Date:
Test Record ID:	C5210-TR190895	ML	9-Oct-2019

	%W/W
Total CBD	19.04
CBD	0.31
CBDA	21.35
d9-THC	0.05
THCA-A	0.79



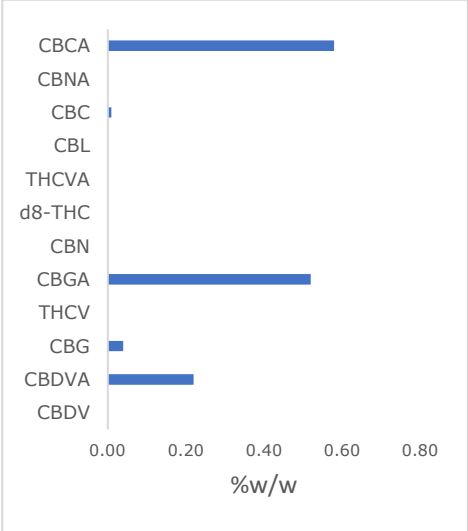
*Total CBD calculated using the molar ratio constant 0.877; results reported on a "dry basis." Measurement uncertainty is estimated to be ±0.04% w/w at 0.3% w/w (95% CI).

Method:	Water Activity/Moisture Content (ASTMD8196-18)	Analyst:	Analysis Date:
Test Record ID:	C6348-TR190130	KT	9-Oct-2019

Water Activity	0.506	Aw
Moisture Content	10.5	%

Certificate of Analysis

Method:	Cannabinoids-Full Screen by LCMSMS	Analyst:	KG	Analysis Date:	29-Oct-2019
Method ID:	C6198 (internal)				
Cannabinoid	%W/W	MG/G			
CBDV	< 0.01	-			
CBDVA	0.22	2.20			
CBG	0.04	0.40			
THCV	< 0.01	-			
CBGA	0.52	5.20			
CBN	< 0.01	-			
d8-THC	< 0.01	-			
THCVA	< 0.01	-			
CBL	< 0.01	-			
CBC	0.01	-			
CBNA	< 0.01	-			
CBCA	0.58	5.80			
Total Minor Cannbinoids	1.37	%w/w			



Method:	Pesticides & Mycotoxins by LCMSMS	Analyst:	KG	Analysis Date:	21-Oct-2019
Method ID:	C5838/AOAC 2007.01				
Mycotoxins	Units	MRL	LOQ	Results	Status
Ochratoxin A	ppb	20	2	< 20	PASS
Aflatoxin B1	ppb		2		
Aflatoxin B2	ppb		2		
Aflatoxin G1	ppb		2		
Aflatoxin G2	ppb		2		
Sum of Aflatoxins	ppb	20		< 20	PASS

LOQ - Limit of Quantitation

Method:	Heavy Metals by ICP-MS	Analyst:	CB	Analysis Date:	14-Nov-2019
Report ID:	C-191022AP				
Heavy Metal	Symbol	Units	Action Limit	Result	
Arsenic	As	ppb	200	63	PASS
Cadmium	Cd	ppb	200	56	PASS
Mercury	Hg	ppb	100	7.1	PASS
Lead	Pb	ppb	500	12	PASS

Reporting limit is 0.1 ppb; results reported on a dry basis; MRL - maximum residual limit allowed by Oregon State Regulations

Comments:	N/A
-----------	-----

Testing Info: All testing is performed by either industry accepted methodology or internal methodology developed, validated and controlled under AOAC and ICH guidelines. Northeast Analytics is a participant in second party sponsored proficiency testing and is currently in the process of receiving ISO/IEC 17025/2017 accreditation. Please direct any inquiries regarding results in this report for additional testing capabilities to analytics@northeastprocessing.com.

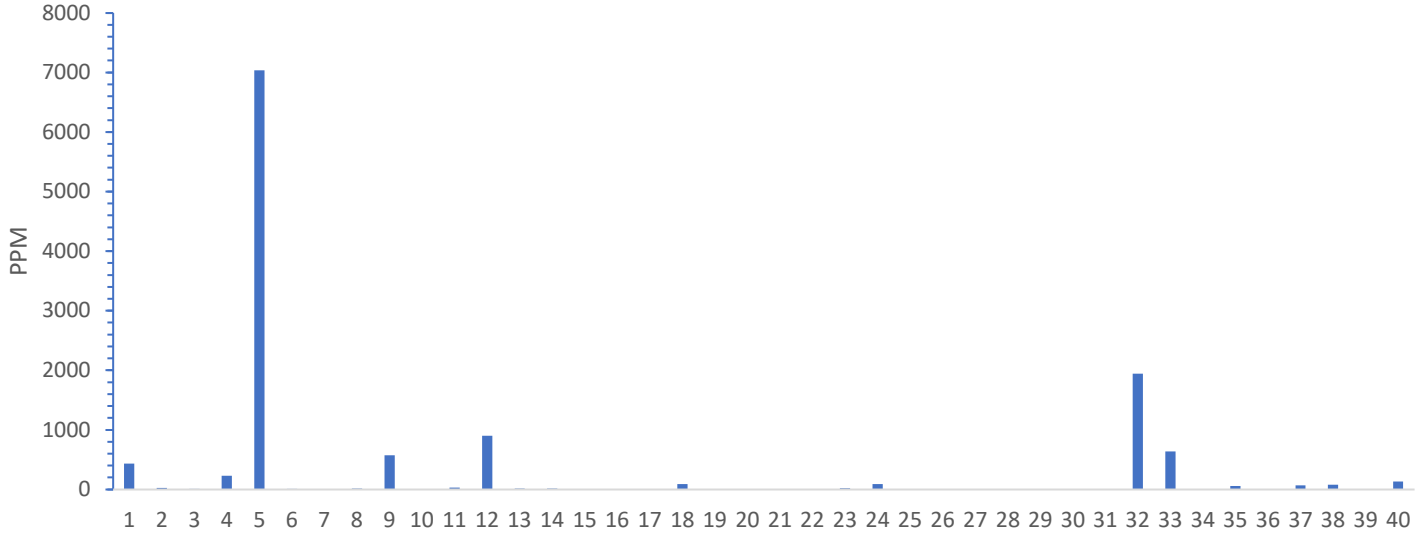


Certificate of Analysis

21 O'Bryan Drive
 Brattleboro, VT 05301
 Ph: (802) 490-2865
Northeastprocessing.com

Method:	Terpen Profile by HS-GCMS	Analyst:	Analysis Date:
Method ID:	NEP-CERF-5933 (internal)	ML	16-Oct-2019

Terpene Profile



Analyte	PPM	Analyte	PPM		
1	a-Pinene	436	21	Isoborneol	< 2
2	Camphene	24	22	Menthol	< 2
3	Sabinene-	8	23	endo-Borneol	18
4	b-Pinene	228	24	a-Terpineol	88
5	b-Myrcene	7038	25	g Terpeneol	< 2
6	.a-Phellandrene	10	26	Nerol	< 2
7	Carene	< 2	27	Pulegone	< 2
8	a-Terpinene	12	28	Geraniol	< 2
9	D-Limonene	573	29	Geranyl acetate	< 2
10	o-Cymene	< 2	30	a-Cedrene	< 2
11	Eucalyptol	31	31	(E)-b-Famesene	< 2
12	b-Ocimene	900	32	Caryophyllene	1943
13	gTerpinene	13	33	a-Humulene	637
14	Terpinolene	12	34	trans-Neradiol	< 2
15	Sabinene Hydrate	< 2	35	cis-Neradiol	55
16	Fenchone	< 2	36	Valencene	< 2
17	Linalool	<2	37	Guaiol	67
18	Fenchol	89	38	Caryophyllene Oxide	80
19	Isopulegol	< 2	39	Cedrol	< 2
20	Camphor	< 2	40	a-Bisabolol	130

*Reporting limit is 2 parts per million; results reported on a dry basis.

Total (PPM) 12392
 Total (%w/w) 1.24